

D210 H

Hybrid Payment Terminal

Contactless, Chip, Magstripe | PCI PTS 4.x
Certied | iOS & Android Compatible | Visa
& MasterCard NFC | Apple MFi Approved |
3G, Bluetooth, WiFi, Ethernet, PSTN



PAX's D210H comes with wired communication capabilities (Ethernet, PSTN) or wireless (3G, WiFi, Bluetooth). Then it guarantees terminal payment acceptance availability in case of network failures. It is a pocket-sized portable terminal designed to interact with customers. Supporting Bluetooth, WiFi, 3G (WCDMA) or cable connection, the D210H connects

to a wide range of existing and new smart devices to keep up with an emerging marketplace. Apple Inc. has given the D210H a special certification called MFi meaning that Apple has tested and approved the D210H to meet the highest performance standards for integration with any iPad or iPhone.

FEATURES & BENEFITS

Stability & Reliability

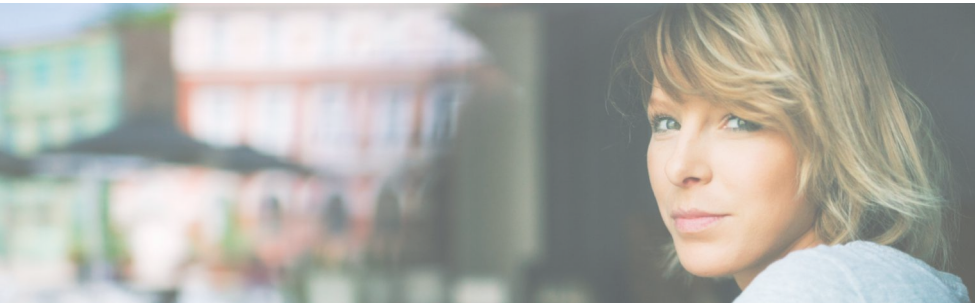
- Smart card, magstripe & contactless enabled
- Stylishly designed for comfort and convenience
- Contactless card reader supporting NFC
- 2.8 inch colour screen
- Large memory capacity

Perfect Expansibility

- Open and flexible OS for customized value-added services
- Supports wired communication capabilities (Ethernet, PSTN) or wireless (3G, WiFi, Bluetooth)
- RS232 interface for connecting barcode reader

Unprecedented Security

- PCI PTS 4.x approved
- Secure key embedded area



D210 H

Hybrid Payment Terminal

SPECIFICATIONS

Processor	32-bit ARM 11
Memory	192MB (128MB Flash, 64MB DDR) Micro SD (TF Card) up to 32GB
Display	2.8 Inch TFT Color LCD, 320 x 240 Pixels E-signature (optional)
Printer	High-speed Thermal Printer, Speed: 30 lps Paper Roll Width / Diameter : 58mm / 40mm
Keypad	10 numeric & 8 function keys
Card Readers	Magnetic Card Reader Smart Card Reader Contactless Card Reader (optional)
Communications	3G (WCDMA) Ethernet PSTN Bluetooth 4.0 / WiFi (optional)
Peripheral Ports	1 x Mini USB (OTG) 1 x Mini USB (RS232) 1 x Power port 1 x Modem 1 x LAN 1 x RS232 (RJ45)
Physical	L x W x H (mm) : 176.05 x 80.06 x 60.38 Weight (g) : 445 (Including Battery)
Voltage	Input: 100 - 240V AC, 50 / 60 Hz, 0.3A Output: 9VDC, 1A
Card Slots	2 SAMs, 1 SIM or 1 SAM, Dual SIM
Environmental	0°C ~ 50°C (32°F ~ 122°F) operating temperature -20°C ~ 70°C (-4°F ~ 158°F) storage temperature 10% ~ 93% relative humidity, non-condensing
Battery	7.4V, 2600mAH
Accessories	Adapter
Certifications	PCI PTS 4.x, SRED EMV Contact L1 & L2 EMV Contactless L1 Visa payWave MasterCard Contactless AMEX Expresspay Discover D-PAS MasterCard TQM

