

PAXIM30

Android Unattended

Revolutionize Your Unattended Transactions



Android Smart OS

Running Android 7.1 OS, the IM30 is an all-in-one payment device providing payment acceptance and value-added business applications.

Sunlight-readable Display

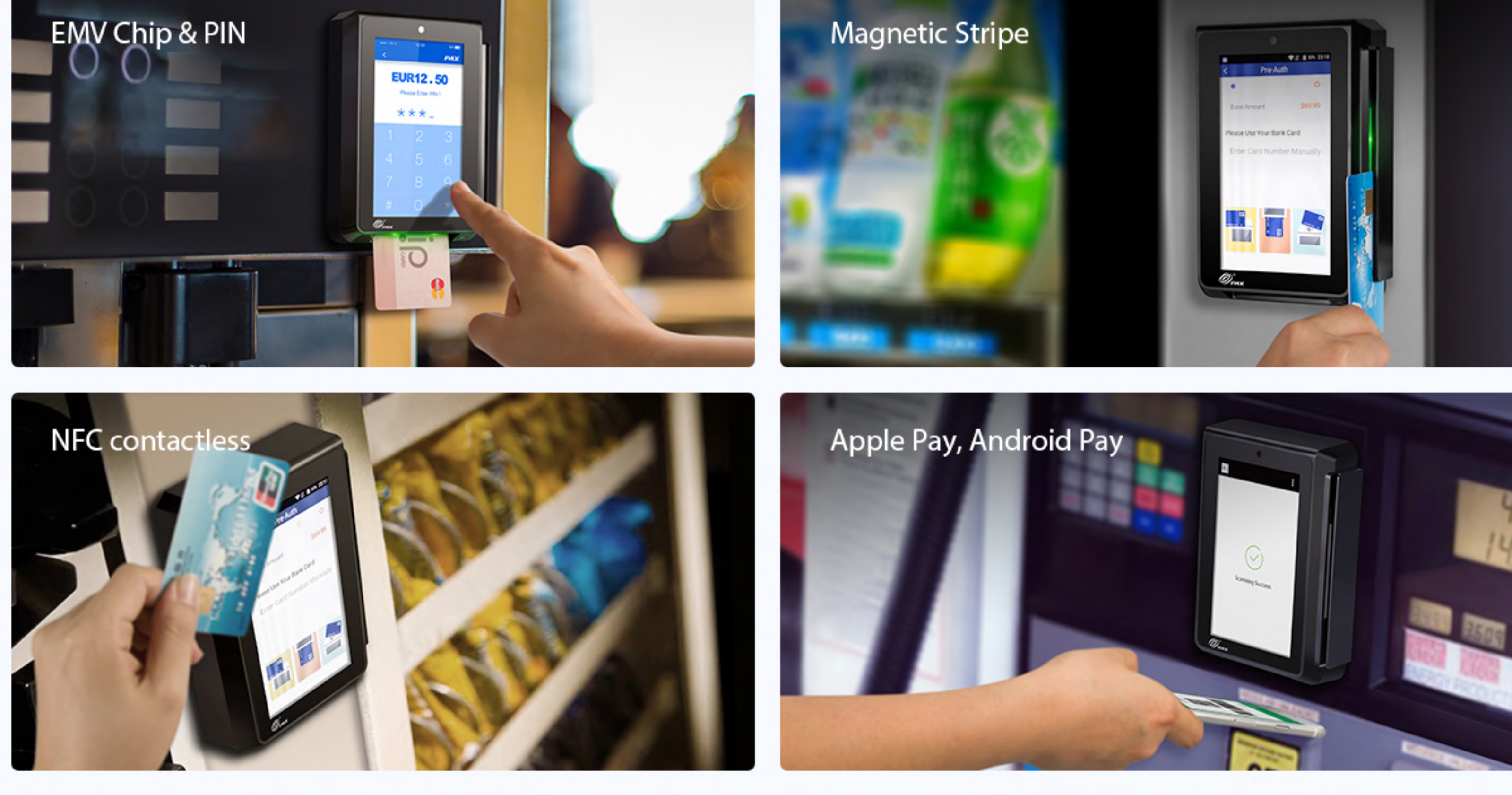
Unique display technology to significantly enhance viewing even in direct or bright sunlight.

- Largest screen ever, 5-inch
- High resolution, 720 x 1280 pixels
- PIN-on-Glass technology



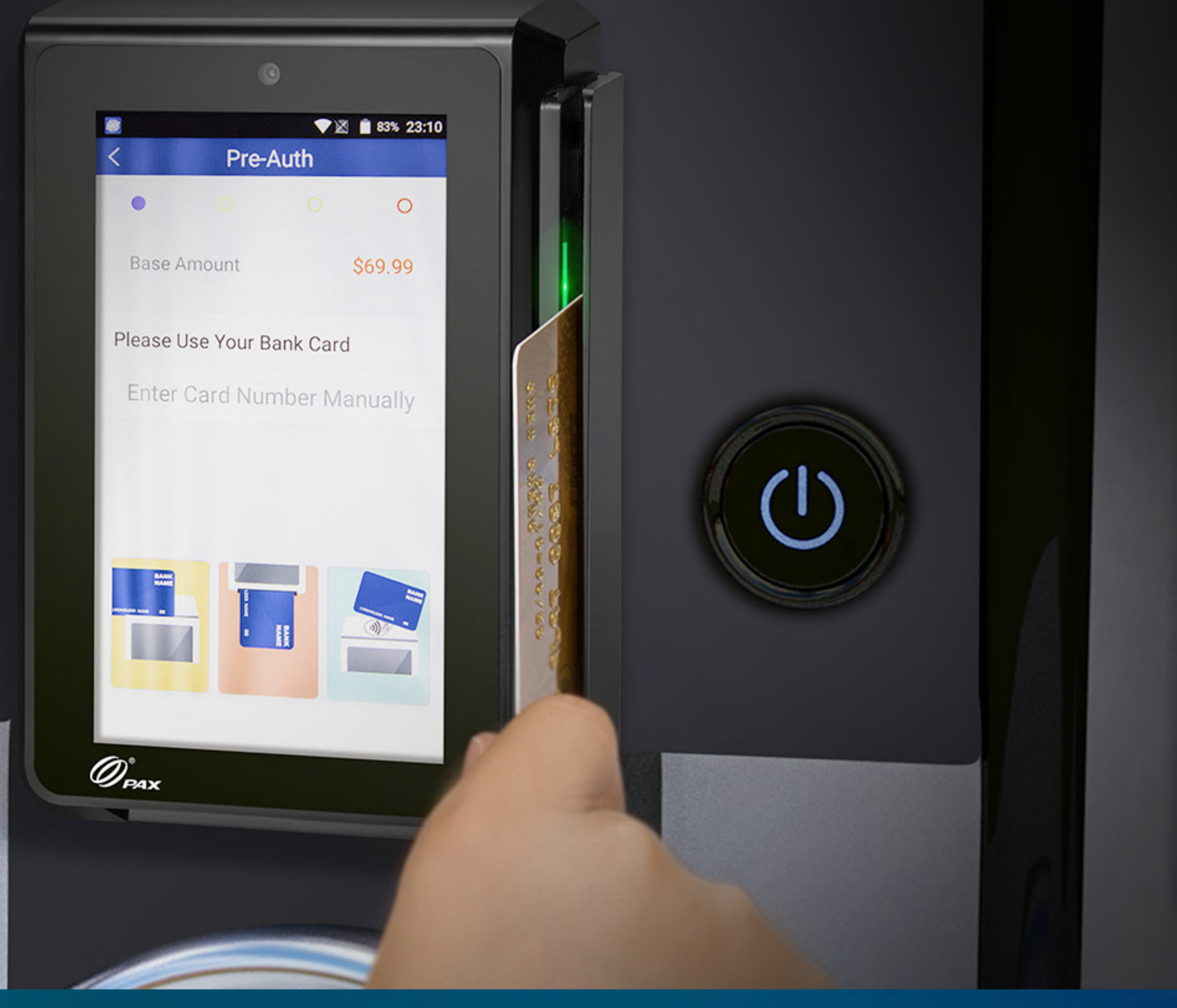
Omni-payment Solution

Traditional and alternative payment methods are all accepted, including EMV Chip & PIN, NFC contactless, magnetic stripe, as well as mobile wallets, QR code payments and barcode scanning.



Fastest Integration

The IM30 meets EVA standard, which means it can be integrated easily with your existing infrastructure.

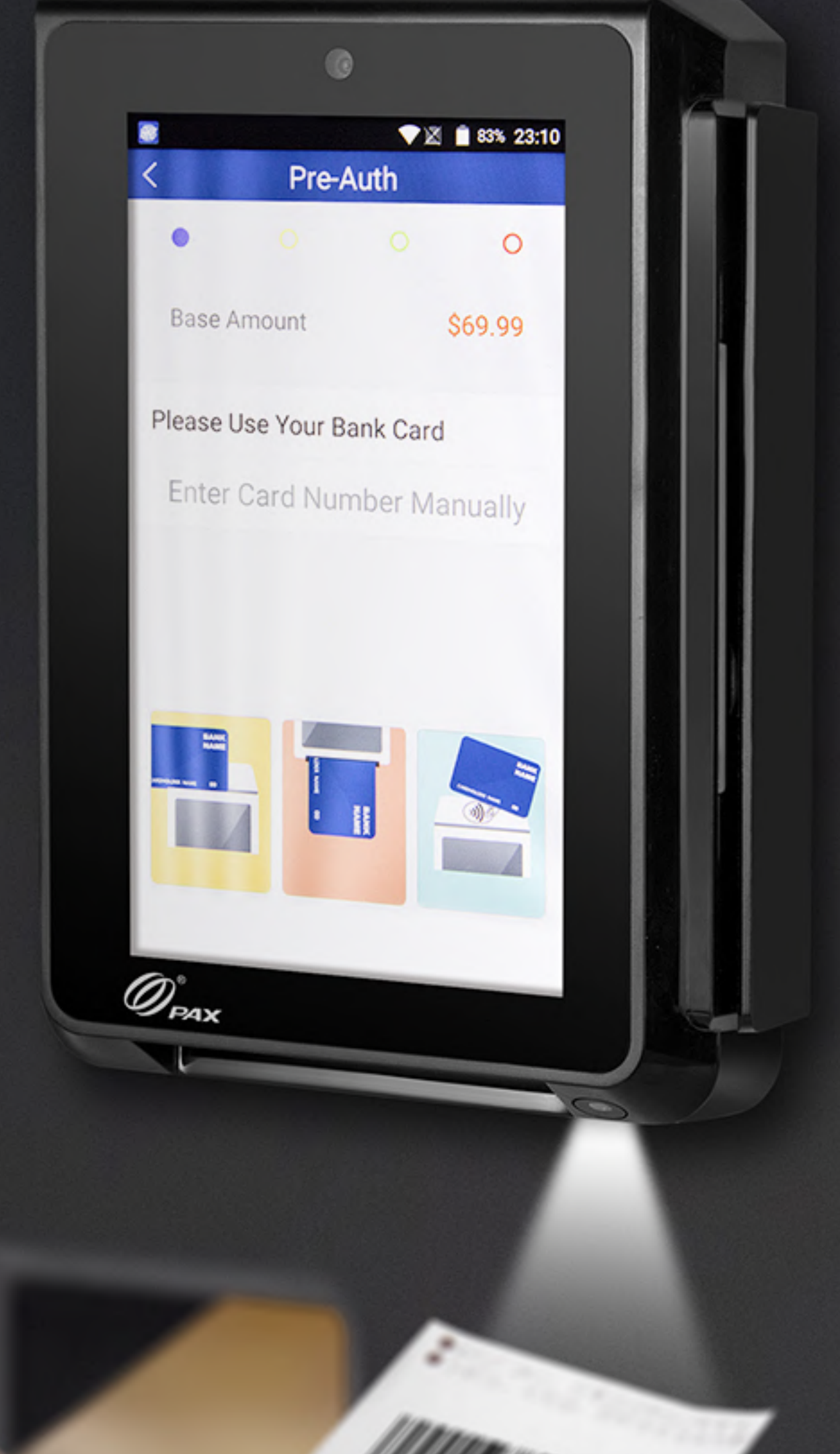


Communication Interface

IM30 provides a full set of connectivity and connections including 4G, WiFi, LAN, MDB, Bluetooth, USB and RS232, perfectly covering most vending system requirements.

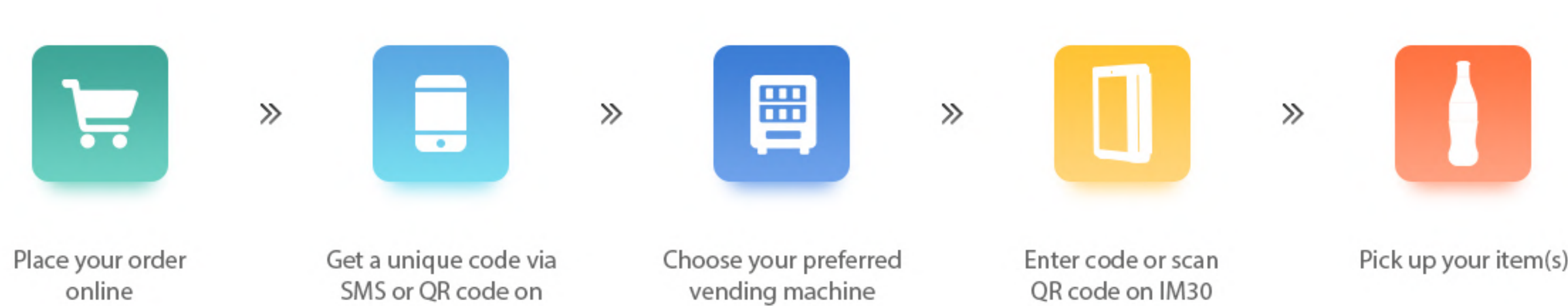
Impressive features

- Low-power Consumption**
The low-power design allows the IM30 to be used in power-limited environments, and the intuitive proximity sensor supports smart energy consumption by switching between different states.
- Front camera**
The high resolution camera helps improve customer service such as push-to-talk, picture surveillance and protect your assets by identifying important customers or potential perpetrators with various Android software.

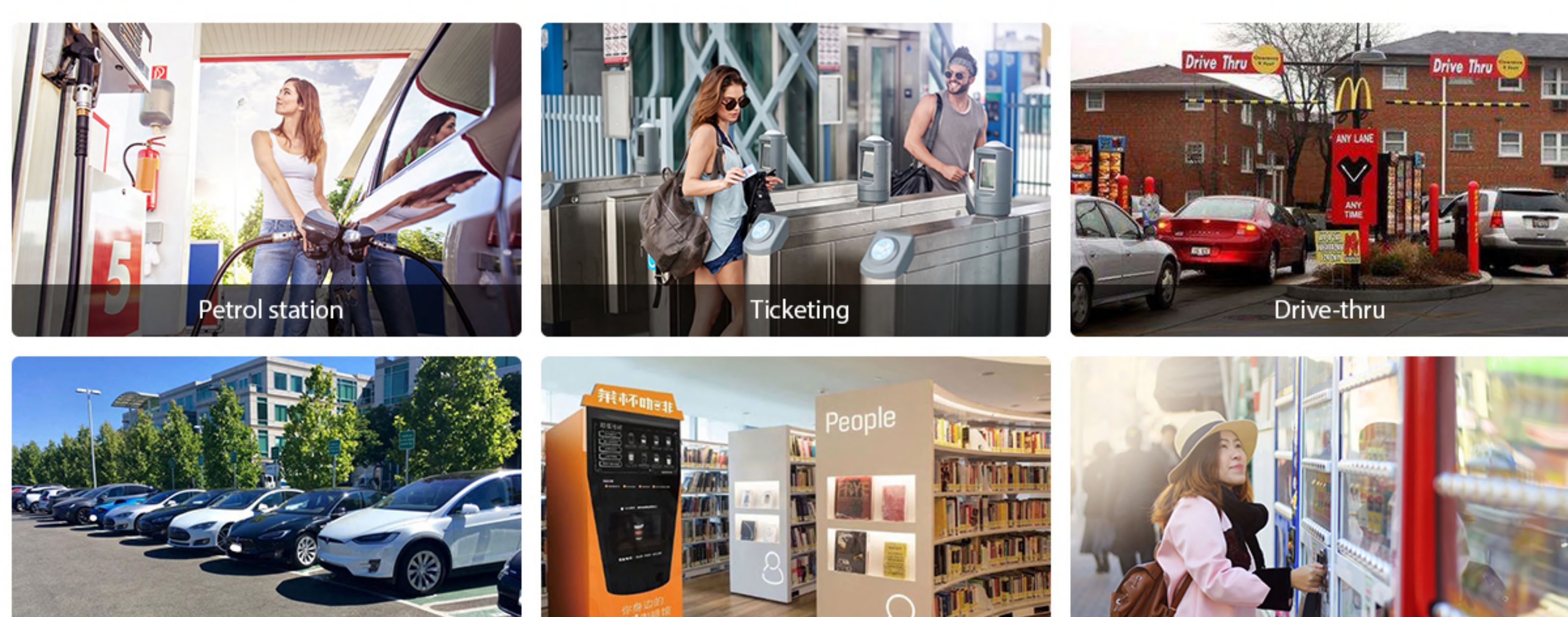


Innovative Self-Service Experience

Buy online, pick up at vending



Ideal for



Technical Specifications

- Operating system**
PayDroid, Powered by Android 7.1
- Processor**
Quad-core Cortex-A53, 1.2GHz
- Memory**
8GB Flash + 1GB LPDDR3 | 2GB LPDDR3 (optional)
- Display**
5 inches TFT color touchscreen
720 x 1280 pixels, IPS
Brightness > 600 nits
Anti-glare
- Camera & QR Scanner**
Camera : 2.0 MP
QR Scanner: 0.3 MP Reads 1D & 2D codes
- Card Readers**
Magnetic Card Reader
Smart Card Reader
Contactless Card Reader
- Peripheral Ports**
2 x RS232 1 x Digital I/Os
1 x USB Host 1 x Mic & Speaker
1 x USB OTG 1 x MDB Master & Executive
1 x LAN 1 x SMA (optional)
1 x MDB Slave 1 x SIM slot (optional)
- Keypad**
Virtual Keyboard on touch screen
Keys (on reverse side):
1 x Reset key
1 x Service key
- Audio**
1 x Speaker
- Communications**
LAN
Bluetooth (optional)
WiFi (optional)
4G (optional)
- Physical**
External dimension:
W x H x D (mm): 105 x 146 x 57
Installation cutout:
W x H (mm): 82 x 107
Weight (g): 486
- SAM Slots**
2 (extendable to 4, optional)
- Certification**
PCI PTS v1, SRED, EMV L1 & L2,
EMV Contactless L1, MasterCard,
payPass, Visa payWave,
American ExpressPay, Discover D-PAS,
MasterCard TQM, Interac Flash L2,
J/Speedy L2, FCC, IC, UL, RoHS,
CE, C/SEC, APCA
- Environmental**
-20°C ~ 70°C (-4°F ~ 158°F)
Operating Temperature
-30°C ~ 70°C (-22°F ~ 158°F)
Storage Temperature
5% ~ 95% Relative Humidity,
Non-condensing
- Power**
12V ~ 48V DC via MDB Slave
12V ~ 48V DC via RS232
19V ~ 30V AC via Executive